



北聖神學院
NORTH AMERICA
BIBLE INSTITUTE

2024 – 2025

學 院 簡 介

Notice

This catalog is provided for the convenience of the academic community at NABI. Although every effort has been made to ensure the accuracy of the information in this catalog, it may change from time to time. Please refer any questions to the Academic Office.

■ Contents

Overview	2
Mission and Vision	3
Campus and Facilities	3
Tatement of Faith	4
Programs	5
I. Doctor of Ministry (D.Min.)	6
Ii. Master of Divinity (M.Div.)	7
Iii. Master of Biblical Studies (M.B.S)	8
Iv. Master of Pastoral Ministry (M.P.M)	9
V. Grad. Diploma of Biblical Studies (GD.B.S.)	10
Vi. Bachelor of Theology (B.Th)	11
Vii. Certificate of Biblical Studies (Cert.B.S)	12
Orgnization Chart.....	13
Faculty	14
I. Resident Faculty	
Ii. Emeritus Faculty	
Iii. Regular Adjunct Faculty	
Academic Policies.....	13
I. Admission Standards and Procedures	15
Ii. Scholastic Regulations	16
Iii. Miscellaneous	18
Library.....	18
Scholship/Tuition Aids	18
Expenses	19
I. Tuition and Fees	
II. Living Costs	
Field Education	19
Student Life.....	20
Course Descriptions.....	24

Overview

North America Bible Institute (NABI), located at the heart of Silicon Valley in the San Francisco Bay Area, California, is an independent theological seminary officially registered as a non-profit corporation in the United States under the federal government and the State of California. It has the status of an Internal Revenue Service (IRS.) 501c3 organization. It was approved by the California Bureau for Private and Post-Secondary Education (BPPE) with religious exempt status to offer degrees in D.Min., M.Div., master's in biblical studies, Master in Pastoral Ministry, Graduate Diploma of Biblical Studies, B.Th. and Certificate of Biblical Studies. NABI was founded and supported by The Home of Christ Church in Cupertino (HOC5) in California. NABI uses HOC5's campus and facilities for its headquarters, staff offices, library, and classrooms. HOC5 also provides financial and teaching support to NABI. HOC5 is an evangelical church with nearly 1,500 members, including the Chinese, English, youth, and children's congregations. It has a very large building and substantial resources. However, NABI is independent of HOC5 in management, finance, and the Board of Directors. The following are NABI's mission and vision.



1. California Bureau approves it for Private and Post-Secondary Education (BPPE) for granting theological degrees.
2. Associate Member of Asia Theological Association (ATA)

■ Mission

1. Based on the Bible and sound theology, an emphasis is placed on the equipment of kingdom workers on practical theology.
2. A passionate and experienced faculty team teaches the students practical skills and fosters spirituality and life examples.
3. To equip full-time and marketplace students to serve at churches, mission fields, and the marketplace.
In addition to full-time students, recruits especially bi-vocational church leaders to serve as ministers, pastors, missionaries, and theological teachers.
4. Enhance the HOC5 Adult Sunday School with NABI's theological education to improve the teaching quality of Adult Sunday School teachers and church leaders.
5. Emphasis on a global theological educational system comprised of faculty and students from North America, Asia, South Asia, and Europe.

■ Vision

Following the Great Commission of Jesus Christ, to equip kingdom workers and harvest in the field in missiology, pastoring, and teaching.

■ Campus and Facilities

NABI is located in Cupertino, south of San Francisco, Northern California, in the heart of Silicon Valley in the Bay Area. There are many high-tech companies in the city and shopping malls. The transportation is convenient, only 20 minutes to San Jose International Airport and approximately 40 minutes to San Francisco International Airport.

The school is at the fifth building of the Home of Christ church, with offices, a library, audio-visual classrooms, an auditorium, a kitchen, etc. There are more than 100 parking spaces in the outdoor parking lot, which is convenient for students to come to class. The library has a collection of about 4,500 volumes, and new books have been increasing steadily. Teachers and students can use the partner seminary America Chinese Evangelical Seminary library (8,000 volumes) nearby for free, and also the Santa Clara Municipal Library and Santa Clara University Library. For a fee, you can also use the Berkeley Graduate Theology Union (G.T.U.) library, which has a collection of over 400,000 books.

NABI Library location



■ Statement of Faith

1. We believe there is one true God, eternally existent in three persons: Father, Son, and Holy Spirit.
2. We believe in God the Father, the all-powerful, all-knowing, all-loving, and all-righteous God, who is the Creator and Sustainer of all things.
3. We believe in the deity of our Lord Jesus Christ, His virgin birth, His sinless life, His miracles, His atoning death through His shed blood, His bodily resurrection, His ascension to the right hand of the Father, and His imminent personal return.
4. We believe in the Holy Spirit, the third Person of the Godhead, co-existent with the Father and the Son. His present ministry is to glorify the Lord Jesus Christ and to indwell, guide, teach, empower the believer, and convict the world of sin, righteousness, and judgment. We adopt a conservative stance concerning excessive charismatic expressions.
5. We believe in the Holy Scriptures, inerrant as originally given, inspired by God, and a complete revelation of His will for the salvation of men. They constitute the divine and highest rule of Christian faith and practice.
6. We believe Man was created in the image and likeness of God but fell into sin. Therefore, the entire human race is lost, and only through repentance and faith in Jesus Christ and regeneration of the Holy Spirit can salvation and eternal life be obtained.
7. We believe the Church is one body consisting of those regenerated by the Holy Spirit, of which Christ is the Head. Christ has commissioned the Church to go into the world as a witness, preaching the Gospel, making disciples of all nations, and teaching the disciples to obey our Lord's commands.
8. We believe there shall be a bodily resurrection of the just and the unjust; for the just, a resurrection unto eternal life; for the unjust, a resurrection unto judgment.

The statement of faith is shared by the board members, educators, personnel, students, and graduates alike.

■ Programs

NABI is currently seeking the accreditation of ATA, to grant the following programs in North America, Asia and Europe/Ukraine

1. Doctor of Ministry (D.Min.)
2. Master of Divinity (M.Div.)
3. Master of Biblical Studies (M.B.S.)
4. Master of Pastoral Ministry (M.P.M)
5. Graduate Diploma of Biblical Studies (G.D.B.S)
6. Bachelor of Theology (B.Th)
7. Certificate of Biblical Studies (Ce. B.S)

North America Bible Institute (NABI) offers seven educational programs. All courses are delivered in classrooms by highly qualified instructors with appropriate theological degrees in their respective academic areas. They teach students with great passion and a loving heart. Classes are held physically on campus at 10340 Bubb Road, Cupertino, CA 95014, U.S.A., or online.



■ Doctor of Ministry (D.Min.)

Courses granting the Professional Doctorate are designed to prepare the graduates for a qualitatively enriched practice of ministry and to function as leaders in denominational and parachurch agencies and as Christian ministry trainers. Each of these also includes sophisticated academic and research components. A full-time student should be able to complete this Program within three years. The Program will consist of seminars, a comprehensive examination, and a dissertation. D. Min. requires 36 credit units, including a dissertation.

Qualifications: Successful completion of a Master of Divinity degree from a recognized institution or its equivalent from a recognized college with a B+ grade or a high second division.

Doctor of Ministry (36 Credit Units)

Year	Credits	Courses
1	12	Expository Preaching3 Localization Evangelism3 Crisis Counseling3 Effective Pastoral Leadership.....3
2	12	Narrative Literature and Expository Preaching.....3 Religious Comparison and Philosophy3 Church Leadership Conflict Resolution.....3 Advance Marriage and Family Counseling.....3
3	12	Thesis Research Methodology2 Thesis Proposal2 Thesis8

■ Master of Divinity (M.Div.)

Courses granting the Master of Divinity degree are designed primarily to qualify graduates to function as principal leaders or ministers. As a graduate-level program, it requires the student to develop and demonstrate critical thinking and dialogic skills, including the ability to identify and critique theological and moral discourse, the ability to frame cogent arguments, the ability to test ideas for biblical fidelity and contextual appropriateness and the ability to communicate ideas effectively in oral or written dialogue.

Courses are designed to focus on both Biblical and practical theology. The Master of Divinity program requires 86 credit units.

Qualifications: Successful completion of a Bachelor's degree. In exceptional cases, older mature candidates (25 and above) who may not have completed the schooling will be admitted upon completing the qualifying assessment.

Master of Divinity (90 Credit Units)

Year	Credits	Courses
1	30	Spiritual Formation & small group training 4 Happiness Group evangelism.....4 Thesis Research Methodology1 Elementary Hebrew or Elementary Greek2 Personal Evangelism in working space3 System Theology in Church History I.....2 Introduction to Exegesis2 Christian Teaching2 Field Education2 Gospel Theology I2 Selected Books of New Testament4 Selected Books of Old Testament2
2	30	Pastoral Theology.....3 Missiology.....2 Biblical Hermeneutics.....3 Hebrew II or Greek II2 System Theology in Church History II2 Christian Apologetics2 Church conflicts and resolutions.....2 Church on-site practical training I.....2 Selected Books of New Testament2 Selected Books of Old Testament4 Selected Applied Ministry.....6
3	30	Hebrew III or Greek III2 System Theology in Church History III.....2 System Theology in Church History IV.....2 Preaching and Practicum3 Church on-site practical training II2 Christian Ethics2 Selected Books of New Testament6 Selected Books of Old Testament6 Selected Applied Ministry.....5

■ Master of Biblical Studies (M.B. S.)

Programs granting the Master of Biblical Studies are designed to qualify graduates for specialized ministry. Students will acquire the knowledge and skills of biblical interpretation and exegesis. Courses also focus on applying the core values, knowledge, and abilities to serve in various ministry roles. This Program requires 60 credit units.

Qualifications: Successful completion of a Bachelor’s degree. In exceptional cases, older mature candidates (25 and above) who may not have completed the schooling will be admitted upon completing the qualifying assessment.

Master of Biblical Studies (60 Credit Units)

Year	Credits	Courses
1	30	Spiritual Formation and small group training 4 Happiness Group evangelism 4 Thesis Research Methodology 1 Elementary Hebrew or Elementary Greek 2 Personal Evangelism in working space 3 System Theology in Church History I 2 Introduction to Exegesis 2 Christian Teaching 2 Field Education I 2 Gospel Theology I 2 Selected Books of New Testament 4 Selected Books of Old Testament 2
2	30	Pastoral Theology 3 Missiology 2 Biblical Hermeneutics 3 Hebrew II or Greek II 2 System Theology in Church History II 2 Christian Apologetics 2 Church conflicts and resolutions 2 Field Education II 2 Selected Books of New Testament 4 Selected Books of Old Testament 4 Selected Applied Ministry 4

■ Master of Pastoral Ministry (M. P. M)

Programs granting the Master of Biblical Studies are designed to qualify graduates for specialized ministry. Students will acquire the knowledge and skills of pastoral and counseling skills. Courses also focus on applying the core values, knowledge, and abilities to serve in a wide range of ministry roles. This Program requires 60 credit units.

Qualifications: Successful completion of a Bachelor's degree. In exceptional cases, older mature candidates (25 and above) who may not have completed the schooling will be admitted upon completing the qualifying assessment.

Master of Pastoral Studies

(60 Credit Units, including 4 Internship credits)

Year	Credits	Courses
1	30	Spiritual Formation and small group training.....4 Happiness Group evangelism.....4 Thesis Research Methodology1 Elementary Hebrew or Elementary Greek2 Personal Evangelism in working space3 System Theology in Church History I.....2 Introduction to Exegesis2 Christian Teaching2 Field Education I2 Gospel Theology I2 Selected Books of New Testament4 Selected Books of Old Testament2
2	30	Pastoral Theology.....3 Missiology.....2 Biblical Hermeneutics.....3 Hebrew II or Greek II2 System Theology in Church History II2 Christian Apologetics.....2 Church conflicts and resolutions.....2 Field Education II2 Selected Books of New Testament2 Selected Books of Old Testament4 Selected Applied Ministry.....6

■ Graduate Diploma of Biblical Studies (GD.B.S.)

This Program is similar to M. BiS but with 30 credit units. It is granting the Master of Biblical Studies is designed to qualify graduates for specialized ministry. Students will acquire the knowledge and skills of biblical interpretation and exegesis. Courses also focus on applying the core values, knowledge, and ability to serve in various ministry roles. This Program requires 30 credit units.

Qualifications: Successful completion of a Bachelor’s degree. In exceptional cases, older mature candidates (25 and above) who may not have completed the schooling will be admitted upon completing the qualifying assessment.

Graduate Diploma of Biblical Studies (30 Credit Units)

Year	Credits	Courses
1	30	Spiritual Formation and small group training.....4 Happiness Group evangelism.....4 Thesis Research Methodology1 Personal Evangelism in working space3 System Theology in Church History I.....2 Introduction to Exegesis2 Christian Teaching2 Gospel Theology I2 Selected Books of New Testament6 Selected Books of Old Testament4

■ Bachelor of Theology (B.Th.)

Programs granting the Bachelor's degree are designed primarily to qualify graduates to function as principal leaders or ministers. This Program requires 108 credit units.

Qualifications: Successful completion of high school or 12 years of schooling or equivalent. In exceptional cases, older mature candidates (25 and above) who may not have completed the schooling will be admitted upon completing the Diploma program and/or fulfilling a qualifying assessment.

Bachelor of Theology (120 Credit Units, including 24 Ministry Credit)

Year	Credits	Courses
1	32	Spiritual Formation and small group training..... 4 Happiness Group evangelism..... 4 Thesis Research Methodology1 Elementary Hebrew or Elementary Greek 2 Personal Evangelism in working space3 System Theology in Church History I2 Introduction to Exegesis..... 2 Christian Teaching2 Church on-site practical training I..... 2 Gospel Theology I2 Selected Books of New Testament4 Selected Books of Old Testament4
2	32	Pastoral Theology.....3 Missiology.....2 Biblical Hermeneutics.....3 Hebrew II or Greek II2 System Theology in Church History II2 Christian Apologetics.....2 Church conflicts and resolutions.....2 Church on-site practical training II2 Selected Books of New Testament2 Selected Books of Old Testament4 Selected Applied Ministry.....8
3	32	Hebrew III or Greek III2 System Theology in Church History III2 System Theology in Church History IV.....2 Preaching and Practicum3 Church on-site practical training III.....2 Christian Ethics2 Selected Books of New Testament6 Selected Books of Old Testament6 Selected Applied Ministry.....9
4	24	Pastoral Ministry and Experience..... 24

■ Certificate of Biblical Studies (Cert.BS.)

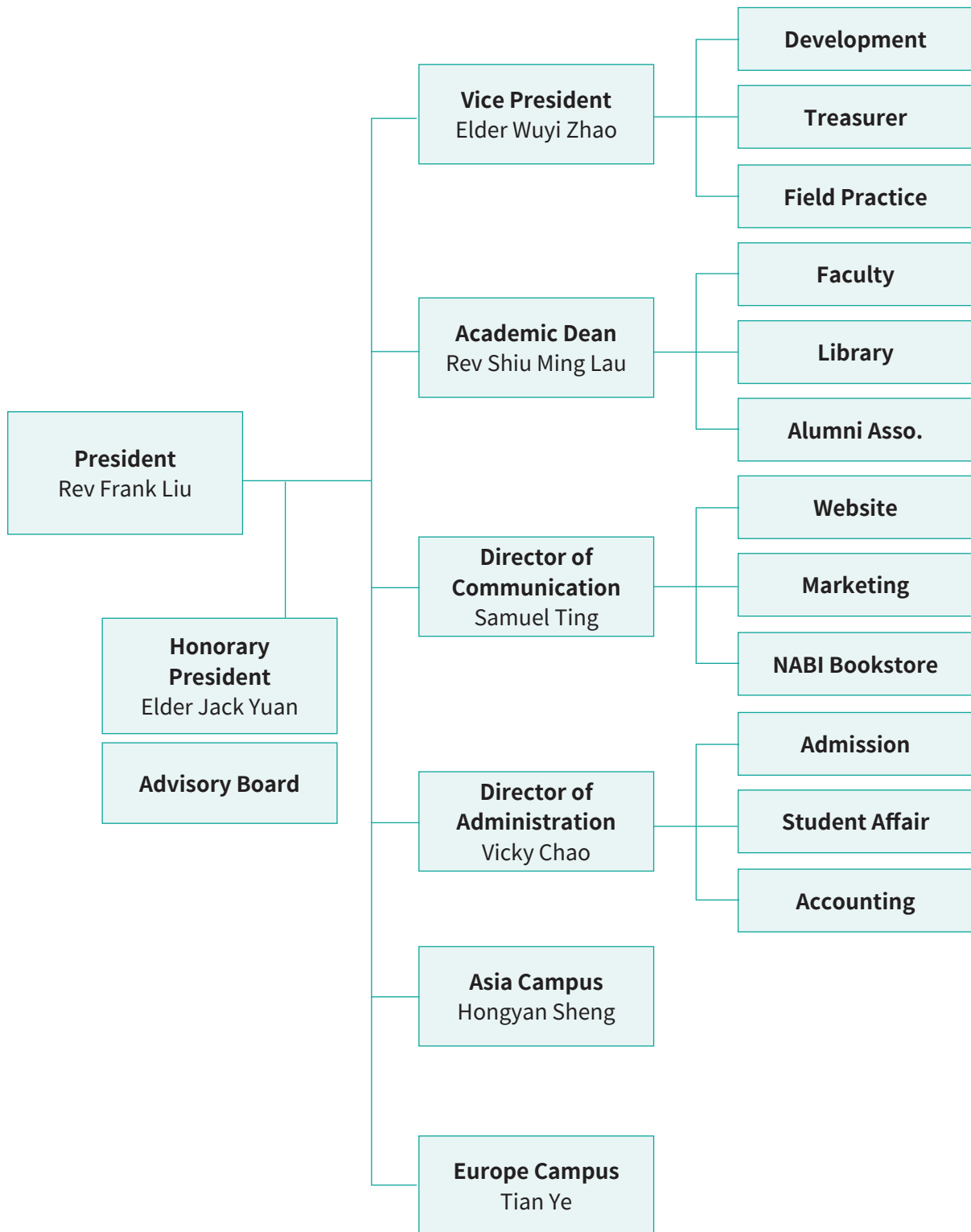
Programs granting the Certificate are designed to provide graduates with a basic foundational level in Bible and ministry. This Program requires 20 credit units.

Qualifications: Successful completion of 6 years of schooling or its equivalent.

Certificate of Biblical Studies (20 Credit Units)

Year	Credits	Courses
1	36	Spiritual Formation and small group training.....4 Happiness Group evangelism.....4 Thesis Research Methodology1 Personal Evangelism in working space3 System Theology in Church History I.....2 Introduction to Exegesis2 Christian Teaching2 Selected Books of Old Testament9 Selected Applied Ministry.....9

■ Organization Chart



Faculty

Name	Teaching Concentration
Rev Frank Liu President, <i>PhD, DMin</i>	Practical Theology, NT
Rev Shiu Ming Lau Academic Dean <i>PhD Candidate, DMin, STM (ThM)</i>	OT, Exegesis, Hebrew, Practical Theology
Michael Ran Faculty, <i>ThM, MDiv</i>	Systematic Theology, Greek, Hebrew
Rev Bill Cho Faculty, <i>DMin</i>	Systematic Theology
Rev Abraham Chen <i>DMin</i>	Missiology, Christian Education, Chinese Church History
Elder Jack Yuan Chair of the Board <i>MDiv*</i>	NT, Practical Theology
Elder Wuyi Zhao Vice President, <i>MDiv*</i>	OT, Practical Theology
Samuel Ting Faculty, <i>MFA</i>	Cloud Ministry, Church Database, Desktop publishing

* Evaluated to be qualified to teach the Mater programs according to 2020 ATA MANUAL FOR ACCREDITATION p33, Item 5. Master of Arts Degree Program or its equivalent, c. Faculty Requirements, (ii) "Consideration may be given to persons with an M.Div./BD degree qualification who have demonstrated abilities in teaching and with five to ten years of teaching experience." Even that, they team up with the higher degree faculty to teach.

Special Adjunct Faculty (Equivalent to Regular Part-Time)

Name	Teaching Concentration
Dr Jenny Tsao, <i>PhD</i>	O.T. Exegesis
Rev Joseph Wang, <i>PhD</i>	N.T. Exegesis, Hermeneutics, Exegesis, Biblical Theology
Rev Henry Chen, <i>PhD</i>	N.T., Exegesis, Practical Theology
Rev Tim Chui, <i>DMin, ThM</i>	Hermeneutics, Exegesis
Rev Wendell Friest, <i>PhD</i>	Psychology, Counseling
Dr Kaye Hsiao, <i>DMin</i>	Counseling, Conflict Resolution, Practical Theology
Rev Tsu-Kung Chuang, <i>PhD</i>	Missiology, Intercultural Studies, Homiletics
Rev Archie Hui, <i>PhD</i>	N.T. Exegesis, Greek, Exegesis, Practical Theology
Rev Samuel Liu, <i>DMin, ThM</i>	Practical Theology

Adjunct Faculty

Name	Teaching Concentration
Rev Caleb Huang, <i>PhD, ThM</i>	N.T. Exegesis, Hermeneutics, Exegesis, Biblical Theology
Rev Wilfred Su, <i>DMin</i>	Pastoral Ministry, Practical Theology, Church Leadership
Ruth Liao, <i>PhD</i>	Solution Focus Counseling, Psychology

Librarian

Name	
Ma Lei, <i>Master of Library and Information Science</i>	Advisor
Sophia Yu, Director	Full time

■ Admission Standards and Procedures

A. The Admissions Committee

1. The Committee shall administrate all affairs pertinent to student admissions.
2. The Committee consists of the following members: Academic Dean, President, and faculty representatives.
3. The Committee meets on a designated date each month.

B. Admission Standards (Please refer to each Program for specific requirements)

C. Admission Procedures

1. Complete the online application from the NABI website.
2. Request official academic transcripts from all post-secondary schools attended.
3. Admission is accepted in either quarter.
4. After a preliminary review of the applications, the Admissions Committee will notify eligible applicants for an interview. For applicants from overseas and out-of-state, the interview will take place via Zoom.

D. Special Instructions

1. Divorced/Remarried/Separated Applicants: These issues may not disqualify you from seminary studies; however, they significantly affect your life and ministry. Therefore, please submit a 1-2 page typed statement explaining the following:
 - The general circumstances. Include counseling and attempts at reconciliation;
 - your view of the Biblical teaching on divorce and how your situation relates to that teaching.
 - The effect you perceive it to have upon your future ministry.

E. Entrance Interview

1. All degree program applicants must pass an admissions interview.
2. The purpose of the interview is for the Committee to assess the applicant's spiritual experience and

readiness for the study of the Program.

F. Notification of Admission

1. After evaluating the application, entrance exam scores, and interview results, the accepted applicants will be notified by mail. The information for Registration will also be mailed.
2. The accepted applicants should return the Admission Contract to the Admissions Office within two weeks from the date of received.
3. If, for any reason, the accepted applicant wishes to postpone his or her admission must notify the Admissions Committee in writing two weeks prior to the beginning of the semester. The student is allowed to defer his or her admission twice.

G. Bible Knowledge Exam

1. The Bible Knowledge Exam is administered at the beginning of each quarter.
2. All who fail the exam the first time may retake it within one Year.

H. Admission Status

1. Regular: An officially admitted student enrolls in a degree program.
2. Auditor: One who enrolls in a class for no academic credit. Auditing is open to students, alumni, and students' spouses. Auditing students shall not exceed 20% of the total class enrollment of each course.

I. New Student Orientation

1. All new students are required to attend the student orientation and activities that are held one month before the beginning of the semester.
2. The orientation includes the introduction of academic policies, campus facilities, computing environment, and all other information concerning student life.

■ Scholastic Regulations

A. Academic Year and term

1. Each academic Year consists of four quarters.
2. Intensive courses will be offered in the summer and winter.

B. Grading System

1. If a student's class attendance falls to 70% or below, credit will not be granted for that course.
2. A grade of C- (70%) or above is considered a passing grade. A grade between D- (60%) and D+ (69%) may allow students to retake the final exam. If the student passes the make-up exam, a final grade of C- (70%) will be given.
3. Grades are given according to the following scale:

Ranking	Score	GPA
A, A+	93 - 100	4.0
A-	90 - 92	3.7
B+	86 - 89	3.3
B	83-85	3.0 (Min. 3.0 for DMin)
B-	80-82	2.7 (Min. 2.5 for masters)
C+	76-79	2.3 (Min. 2.3 for bachelors)
C	73-75	2.0
C-	70-72	1.7
D+	66-69	1.3
D	63-65	1.0
D-	60-62	0.7
F	60 or below	0.0
P	Passed	
N.P.	Not passed	
I	Incomplete	
IP	Course in progress	
W.P.	Withdrawn with passing	
Grade	Withdrawn with failing	
Grade	Not reported	

C. Paper Requirements

All course assignments are due two months after the course is completed. A student may apply for "Incomplete" if he or she cannot meet the deadline.

1. A student who needs to apply for an "Incomplete" for the course must meet the following requirements:
 - Severe medical conditions (must submit a letter of proof from the doctors)
 - Bereavement (with brief description)
 - Unexpected severe circumstances (must attach a letter of explanation)
2. A student who has met any of the above requirements may request an "Incomplete" on the Grade by submitting an application form for Incomplete,
3. If an "Incomplete" is granted, the unfinished course works should be due and received by the professor within three months. All "Incomplete" courses will automatically receive one Grade down from the given Grade (e.g., from A- to B+).
4. Each "Incomplete" course may be extended one time only. Renewal of extension will not be granted. Students will only be allowed a maximum of 3 "incomplete" in total.

Policy of Plagiarism

Whether the quotation is from a printout or an online resource, citing the resources

when referencing other people's data, views, or ideas is necessary. If one copies a phrase, a sentence, or a paragraph from others without using quotation marks and does not indicate the source, it will be considered plagiarism. Plagiarism is dishonest and unethical behavior. One who commits plagiarism may face the termination of his or her studies.

1. Buying a research paper from any of the resources.
2. Copying an article from any of the Web-based resources.

3. Translating any of the foreign articles into English or Chinese without citing the source.
4. Creating a paper by cutting and pasting from several sources.
5. Quoting less than all the words copied or faking a citation.
6. Changing only some of the words but copying the whole phrases
7. Paraphrasing or summarizing other people's ideas without attribution.

Penalty

1. The student will need to redo the assignment. The final Grade of the course will be C or below.
2. The student must schedule an appointment with the Academic Dean for further learning on how to avoid plagiarism.
3. The student will be sent to the Conduct Committee if he/she commits plagiarism again.

D. Registration and Course Selection

1. All students must register before the deadline. Otherwise, the student will need to pay a late registration fee.
2. All students must follow the registration procedures set out by the Academic Office.
3. When students register, they must register according to their Program and their concentration, with core courses taking priority. A student may not take more than ten units in a semester unless they have prior approval from the Academic Dean.
4. All fees are payable upon Registration unless the student requests a deferred payment plan from the Accounting Office.
5. Students with financial needs may apply for financial aid from the Student Development Department.

E. Changes in Course Registration/Cancellation and Withdrawals

Students can change their course registration within the first ten days of any regular school semester. Audit courses may not be dropped after school starts. After the third week, no course may be added. Intensive course,

F. Independent Study Policy

1. Students with special interests or particular needs (e.g., need to take a specific course to graduate) may apply to take an independent study course under the supervision of a designated instructor. The total independent study units may not exceed nine units for M.Div. students and six units for Master students.
2. Tuition fee is charged separately for independent study courses.
3. The independent study time is the same as the regular school semester. Credit may be granted after passing the evaluation.

G. Leave of Absence

1. Students who do not wish to register for the consecutive quarter (excluding the summer semester) must file either "Leave of Absence" or "Withdraw."
2. Leave of absence is valid for one Year, and students must re-file each Year.
3. Students who fail to file a leave of absence are considered withdrawn from the Program.
4. Students may resume their studies via a reinstatement form after the leave of absence.

H. Transfer of Credits

1. From ATS. or ATA-accredited seminaries
 - Course(s) to be transferred must have a B or above Grade.
 - Course(s) considered for transfer must be taken within seven years.
 - The total credits transferred must not exceed 1/2 of the degree requirement.
2. The seminaries without ATS or ATA accreditation will be considered case by case.

I. Credit Earning at Extension Site

1. Students may complete all the program requirements at the extension site for those programs with degree-granting approval from ATS or ATA.
2. Students pursuing programs not degree-granting approved by ATS or ATA. at the extension site may take up to half the program requirements and complete the rest at the main campus.

■ Miscellaneous

A. Academic Transcripts

1. Students' official academic records include all the courses done, and the grades will be kept permanently. All other information or documents will be kept in Academic Office for five years. The transcript may not be released without an online request from the student to the Academic Office.
2. Students have the right to request their transcripts be issued to designated individuals or institutions.

B. Rights to Access Academic Records

1. Students have the right to review their academic records and request amendments to ensure accuracy.
2. If, on the student's application form, the student had waived the right of access to the reference letters that were sent to the school as part of the student's admission procedures, the student may not have access to those letters.

C. Online Courses / Distance Learning

1. All the students may complete the Program through online courses.
2. NABI offers distance education that is online through the Internet. All the correspondence sent between students and instructors is sent online without any time elapse.

■ Library

The NABI Library has been actively expanding its collection since its establishment to accommodate the Seminary's growth. Currently, the library has a vast collection of nearly 4,500 books in both Chinese and English languages. Moreover, NABI has partnered with the American Chinese Evangelical Seminary, resulting in an additional collection of over 8,000 books.

The NABI Library boasts a wide selection of over fifty periodical titles, available in Chinese, English, and other foreign languages. In fact, the library subscribes to more than a hundred current periodical titles. The multimedia materials collection includes DVDs, videos, audio cassettes, Sunday school materials, and Bible maps on transparencies, providing a diverse range of learning resources for students.

Additionally, the library provides wireless internet connection to all students, which they can access through their personal computers, facilitating access to the online database.

■ Scholarship/Tuition Aid

NABI tuition aids are set up by the grace of God and through the love offerings of many churches, parachurch organizations, and Christian brothers and sisters. When a full-time student with demonstrated academic ability and superb qualifications encounters financial difficulty, he or she can be granted tuition assistance after formally applying for student tuition aid and being approved for such an application. Thus, all applicants should first fulfill their responsibilities and obligations, look to God in faith, and be thankful to the donors who contribute to student tuition aid out of love.

NABI has a Student Scholarship and tuition assistance scholarship. The Scholarship and Grant Committee consists of the Academic Dean and faculty representative. The Committee is responsible for directing and evaluating all tuition aid affairs.

■ Expenses

	<i>D.Min.</i> (45 units)	<i>M.Div.</i> (90 units)	<i>M.B.S., M.P.M.</i> (60 units)	<i>GD.B.S.</i> (30 units)	<i>B. Th.</i> (108 units)	<i>Ce.B.S.</i> (20 units)
North America	\$9,000 (\$200/unit)	\$13,500 (\$150/unit)	\$9,000 (\$150/unit)	\$4,500 (\$150/unit)	\$8,400* (\$100/unit)	\$600 (\$30/unit)
China	¥27,000 (¥600/unit)	¥18,000 (¥200/unit)	¥12,000 (¥200/unit)	¥6,000 (¥200/unit)	¥10,920* (¥130/unit)	¥2,000 (¥100/unit)
Taiwan	NT\$135,000 (NT\$3,000/unit)	NT\$90,000 (NT\$1,000/unit)	NT\$60,000 (NT\$1,000/unit)	NT\$30,000 (NT\$1,000/unit)	NT\$54,600* (NT\$650/unit)	NT\$10,000 (NT\$500/unit)
Europe/Ukraine	€4050 (€90/unit)	€2430 (€27/unit)	€1620 (€27/unit)	€810 (€27/unit)	€1512* (€18/unit)	€280 (€14/unit)

* Exclude 24 ministry credits fee

■ Living Costs

NABI does not provide dormitory living.

The following is just for reference if there is a dormitory living. Students are responsible for their room and board.

The following is an estimate of costs for room and board for twelve months in dormitory housing:

Single student: \$14,500

Married couple: \$16,500

Children: each \$2,000

■ Field Education

Qualifications

All local and international students in the M.Div. and Master programs Master of Divinity program must apply and register for two semesters of field education work.

■ Student Life

Student Development Department

The Student Development Department follows the education objectives of the Seminary in helping students become ministers who please the Lord and glorify God in their spiritual formation, intellectual endeavor, Christian service, and personal lifestyle.

A. Goal:

1. To help students obtain a balanced development in physical, mental, and spiritual well-being.
2. To establish an effective channel of communication between the Seminary and the students.
3. To counsel students to involve themselves in community life actively.
4. To enhance the spirit of unity of the Seminary.

B. Ministries:

1. To oversee the students' spiritual life, personal evangelism, and community care through advisor/advisee groups.
2. To advise on the activities sponsored by the Student Council.
3. To invite ministers, overseas missionaries, or other professionals to the Seminary to share their ministerial experiences and other special topics.
4. Coordinate programs of scholarships and grants.
5. To care for students' well-being, marriage, and family relations.
6. Plan the freshman training course (APS01 Orientation-All) for each semester, the school-wide spiritual camp for teachers and students before the semester each fall, and the seminary students and ministers' personal growth courses (Seminarians and Ministers' Personal Growth)
7. To plan Wednesday weekly staff prayer meetings, chapel worship meetings, and afternoon student activities.
8. To provide advice and solutions to students in emergencies and to handle general grievances.

NABI Student Council

NABI Student Council is composed of all full-time students studying at NABI. The leaders of the Council are the chairperson and vice-chairperson. The purpose of the Council is to arrange student activities on and off campus to enhance fellowship among students and create a communication channel between Seminary and students. Moreover, it promotes student participation in the Seminary's training and events

Student Medical Care

1. All full-time students must enroll in a basic health insurance program before Registration.
2. Some over-the-counter medicines are provided in the medical cabinet located at the Student Development Department.

Standards of Conduct

Students are called to be ministers or to work in parachurch organizations according to the principles of the Bible. They should set examples in their behaviors and conduct for the laypeople. The seminary expectation for students' conduct and life is higher than the standards set by society. Students are expected to comply with the law, respect proper constitutional authority and obey seminary policies, rules, and regulations. Unacceptable conduct is defined as an action or behavior contrary to the best interest of a fellow student or students, the faculty or staff, the Seminary, or the teaching/learning process. Students failing to perform according to established standards may be subject to disciplinary action. Violation of this standard shall include, but is not limited to:

1. Academic misconduct including, but not limited to, cheating, fabrication, plagiarism, and facilitating academic dishonesty;
2. Physical abuse, verbal abuse, threats, intimidation, harassment, coercion, and other conduct which threatens or endangers the health or safety of any person;

3. Use or possession of illegal drugs, drinking alcoholic beverages, and smoking;
4. Sexual misconduct includes but is not limited to, sexual offenses, sexual harassment, and homosexual behavior;
5. Attempted or actual theft or damage of Seminary or personal property;
6. Unauthorized possession, duplication, or use of keys to any Seminary premises or unauthorized entry to or use of Seminary premises;
7. Illegal or unauthorized possession of firearms, explosives, other weapons, or dangerous chemicals on Seminary premises;
8. Theft or abusive use of the Seminary's computer equipment, including but not limited to:
 - a. Unauthorized entry into other personal, staff, or faculty files to use, read, or change its contents for any purpose;
 - b. Unauthorized transfer or deletion of Seminary's computer system files;
 - c. Unauthorized use of another individual's identification and password;
 - d. Use of computing facilities to interfere with the work of another student, staff, and faculty member;
 - e. Use of computing facilities to view, send or receive obscene or abusive, or other inappropriate messages;
 - f. Use of computing facilities to interfere with the normal operation of the Seminary computing system;
9. Fighting; abusive or vulgar language.
10. If, for any reason, a student's marital status changes during the Program of study (e.g., marriage, divorce, remarriage, etc.), he or she shall notify NABI. If the student intends to conceal the fact, the case will be forwarded to the Student Disciplinary Committee for further evaluation.
11. Violation of Seminary academic regulations and policies:
Considering the spirit of Galatians 6:1-2, the Student Conduct Committee intends to exercise genuine

Christian concern in its dealings with students and that its actions would result in learning, personal growth, and professional development. The long-term welfare of the students, the seminary community, and the churches should be the primary concerns of the Committee's decision process.

To make this a truly responsible and redemptive community, it is expected that all students, faculty, and staff will jointly accept the responsibility of reporting such actions as may be unacceptable, unethical, or detrimental to a Christian academic community or to the ministries that they serve.

Any questionable actions may be reported to the Academic Office. The Dean will make necessary inquiries or investigations into the matter promptly. This process may consist of personal conversation with all the parties involved to determine whether the matter has merit or can be disposed by mutual consent on a basis acceptable to all parties.

Any disciplinary action toward the involved student shall be reported to the faculty meeting. A written report of disciplinary hearing proceedings, determination, and appeal, if any, will be made and kept on file in the Student Development Office.

Disciplinary Action

1. **WARNING:** A written notice to the student who has, for the first time or unintentionally violated institutional regulation. A disciplinary record is maintained for one Year from the date of imposition of the sanction.
2. **PROBATION:** Disciplinary probation will be required in the event the conduct or attitude of a student violates the Seminary's regulations. The student will be placed on disciplinary probation for one academic semester. If the student fails to improve, he or she may be suspended or dismissed from the Seminary.
3. **SUSPENSION:** A student who may be suspended for any specified length of time is determined by the Academic Office. After the expiration of the specific length of time, the student may petition to resume his or her studies.

4. DISMISSAL: Permanent dismissal from the Seminary will apply in cases where the Student Conduct Committee deems there is evidence that the student's conduct, achievement, or other factors warrant such action.
5. Any of the above may be noted on the student's transcript for a duration of one to three years and may be removed at the discretion of the Committee.

Student Grievance Policy and Procedure

1. In the spirit of Matthew 18:15-22, any student with a grievance is encouraged to go to the student, staff, or faculty member with whom he or she has a grievance and to discuss the issue with that Person. The desire is to resolve the grievance in the early stages of the procedure. If the student feels that the issue cannot be resolved by him or her, he or she may use the following procedures:

Should the student not be comfortable initiating such a meeting on his or her own, the Academic Advisor is available to assist the student in a strictly confidential manner. The procedure is concluded if an acceptable solution is reached between the student and the involved party. Should either Person wish written documentation of the resolution, the two parties shall write such, and each Person will sign, date, and retain a copy for themselves and a copy in the Student Services Department.

2. If the grievance is not resolved, the student may pursue the matter further. He or she who has a legitimate unresolved grievance should send a written statement promptly (within two (2) weeks after the unresolved meeting) to the Dean of Students. The statement shall clearly state the nature of the complaint and the steps already taken. The Dean of Students will meet with each party separately and examine the case carefully. The Dean will then meet with the involved parties to seek possible solutions or resolutions for the grievance. If the grievance is resolved, a written summary of the resolution with signature from each party will be made within two weeks. Copies will be retained by the involved parties and kept in the Student Services Department.

3. If the grievance is not resolved through the steps above, the student may make a written request, within two weeks, to the Executive Committee for further review. The Chair will convene a meeting to hear and resolve the grievance. The Committee may request that additional people be present for the hearing as it deems necessary and relevant. The Committee's recommendations and action for resolution will be presented in writing to each party in the grievance within thirty (30) days of the hearing, which each party will sign. Copies of the resolution will be retained, along with a written record of the hearing in the Student Services Department. In all cases, the Committee's recommendations and action for resolution will be final. Any resolution or disciplinary action will also be reported in the Administrative or Faculty meetings, respectively.

Sexual Harassment Policies and Procedures

The Seminary is committed to providing and maintaining a healthy learning and working environment for all students, staff, and faculty members. The existence of sexual harassment on campus undermines the educational environment, and thus the Seminary is committed to taking action to prevent and eliminate all such behavior and will hold individuals who engage in such behavior responsible and subject to disciplinary action. These procedures apply to all employees, staff, faculty, and students of the Seminary. The Seminary does not condone any acts in violation of its Sexual Harassment Policy involving any third parties, including visitors and employees of contractors.

1. Definition: Sexual Harassment is defined to include direct and indirect sexual advances. Sexual harassment includes unwelcome sexual advances, requests for sexual favors, or other verbal or physical conduct of a sexual nature.
2. Sexual Harassment Grievance Officers
 - a. The Vice President of Administrative Affairs and the Dean of Academic Affairs will assist faculty, students, or staff who may have been subjected to sexual harassment.
 - b. Any complaints about any Grievance Officer or any other administrator shall be directed to the President.

3. The Complaint Process: Problems, questions, and complaints of sexual harassment can be discussed with the Grievance Officer.
 - a. Informal Complaint. Every effort will be made to resolve the complaint informally. If the complaint cannot be informally resolved, the complainant will be advised to initiate a formal complaint. Merely discussing the complaint does not constitute a formal charge of sexual harassment.
 - b. Formal Complaint.
 - A formal complaint is one that has been reduced to writing and signed by the complainant. Complaints should be sent to any one of the Grievance Officers.
 - During any formal complaint investigation, the accused must be notified of the complaint and the identity of the complainant. The specific charges shall be shared with the accused as soon as practicable. Beyond this sharing of information, confidentiality will be maintained to the extent possible until formal disciplinary action is pursued.
 - All formal actions regarding violation of the Seminary's Sexual Harassment Policy and Procedures by any faculty member, staff, or student will be governed by the disciplinary procedures of the Seminary. Sanctions may include dismissal from the Seminary. In any case, the accused shall have the right to counsel. Only sustained charges will be entered into permanent files.
4. Retaliation: No person exercising his or her rights and/or responsibilities under the Sexual Harassment Policy and Procedures shall be subject to retaliation or threat of retaliation in any form. A charge of retaliation or threat of retaliation shall be treated as a separate allegation from the charge of sexual harassment. A finding of retaliation or threat of retaliation shall constitute a separate violation of this policy and is not dependent upon a finding of violation of any other section of the policy.
5. Patently False Accusations: Patently false accusations of sexual harassment will constitute a violation of the Seminary's regulations and subject the accuser to the Seminary's sanctions.

Student Services

A. Placement Information Service

1. NABI serves all Christian churches. Graduates of this Seminary are free to select their fields of ministry under the guidance of God.
2. NABI accepts students commissioned by their churches or organizations and will encourage these students to serve in their churches or organizations upon graduation.
3. The Student Development Department has an up-to-date placement opportunity list to provide students with short-term or long-term employment opportunities in local churches and organizations.

■ Course Descriptions

B 聖經科目 Biblical Studies

BL	聖經語文	Bible Language
BO	舊約	Bible Old Testament
BN	新約	Bible New Testament
BS	釋經	Bible Exegesis

T 神學歷史科目 Theological Studies

TT	神學	System Theology
TR	宗教研究	Theological Region Studies
TH	教會歷史	Theological Histories

P 實踐科目 Practical Theology

PS	靈命塑造	Practical Spiritual Formation
PP	講道/教育	Practical Preaching
PT	牧養	Practical Pastoral
PC	輔導	Practical Counseling
PM	媒體事工	Practical Media
PS	Small Group Leading	
PE	Practical Evangelism	

M 宣教科目 Mission Theology

MM	宣教	Mission
ME	宣教	Evangelism

P/E 實習或個別指導

FE	實習	Practical Field Studies
GS	個別指導	Practical Individual Studies

Spiritual Courses

PS101 Spiritual Formation I (2 hours)

A study of the spiritual dynamics involved in the transformation of a person. The course provides biblical, theological, and psychological perspectives and self-assessment for understanding human conditions, spirituality, and how holy habits are formed. The focus is on the spiritual disciplines that nourish Christian growth.

PS201 Spiritual Formation II (2 hours)

This course is a study on the indwelling of Christ, inner healing, and spiritual discernment through studying the Bible, the works of masters, and discussion of course readings. The focus is on personal practice and its application in small group settings.

PS205 Family of Origin (2 hours)

A study of family systems and how family of origin forms our self-value, interpersonal relationship, and negative influences. Topics include differentiating from the family of origin and building a healthy self. Include group therapy time to increase self-awareness.

PS206 Emotional Regulation (2 hours)

A study of emotions' nature, role, and function, how they impact actions and choices, and how to recognize and regulate emotions. Topics include the theology of emotions and their impact on spirituality. Include group therapy time to increase awareness of one's own emotions.

PS301 Mission Mentorship (1 to 2 hours)

A series of seminars by seasoned missionaries to share practical experience, discuss skills and strategies in evangelism, answer questions, and pray together. In addition, through personal consultation and small group format, students learn to carry out missions more effectively.

PS 302 Pastoral Mentorship (1 to 2 hours)

A series of seminars by seasoned pastors to share practical

experiences, discuss pastoral skills and church planting strategies, answer questions, and pray together. In addition, through personal consultation and small group format, students learn to carry out pastoral ministry more effectively.

PS 401 Mission Internship (1 to 4 hours)

A planned, supervised, and evaluated practical experience in a cross-cultural evangelistic setting with supervision.

PS 402 Pastoral Internship (1 to 4 hours)

A planned, supervised, and evaluated practical experience for three months in a church setting with pastoral supervision.

PS 501 Small Group & Discipleship (1 to 6 hours)

Small group is a knowledge-in-action program through regular meetings with faculty and students for discipleship, counseling, and community experience. The meetings are designed to be a formative process for spiritual growth and character formation.

Biblical Studies Courses

BL103 Greek I (2 hours)

An introduction to the basic grammar and vocabulary of New Testament Greek, with practice in reading the book of First John.

BL104 Hebrew I (2 hours)

An Introduction to the basic grammar and vocabulary of Old Testament Hebrew, with practice in reading the book of Samuel.

BL201 Greek II (2 hours)

A continuation of BL103. A study of basic grammar and vocabulary of New Testament Greek, with practice in reading the book of First John.

BL202 Greek III (2 hours)

A study of the more advanced New Testament Greek grammar and syntax, with practice in reading the book of Philippians in reference to theological dictionaries and critical commentaries.

BL203 Hebrew II (2 hours)

A continuation of BL104, a study of the basic principles of morphology and grammar of Old Testament Hebrew, with practice in reading the book of Samuel.

BL204 Hebrew III (2 hours)

A study of textual criticism, lexical and syntactical analysis of the Old Testament Hebrew texts, with practice in reading the book of Jeremiah in reference to versions and critical commentaries.

BS301 Biblical Interpretation (3 hours)

A study of the history of biblical interpretation, exegetical methods and tools, and the theories of understanding and interpreting biblical texts. Special attention will be given to the influence of presupposition, the nature of language, and the approach of text-centered interpretation.

BO202 Daniel & Zechariah (2 hours)

A literary, historical, and theological study of the Books of Daniel and Zechariah, with special attention to apocalyptic literature and contemporary application.

BO211 Pentateuch (3 hours)

A study of the content and theology of the first five books of the Old Testament. Special attention will be given to literary nature, structure, and theological message. The origin and genetic development of the Pentateuch will also be discussed.

BO211 Pentateuch (3 hours)

A study of the content and theology of the first five books of the Old Testament. Special attention will be given to literary nature, structure, and theological message. The origin and genetic development of the Pentateuch will also be discussed.

BO212 Historical Books (3 hours)

A study of the content and theology of the Former Prophets of the Hebrew Bible, i.e., the books of Joshua, Judges, Samuel, and Kings. Special attention will be given to their literary relationship with Deuteronomy and a critique of contemporary critical scholarship.

BO213 The Biblical Israel (2 hours)

A study tour of Israel with special attention to the geographical and historical setting of the Bible and the culture background as indicated by archaeological finds. There will be classes before and during the tour to facilitate students to understand Biblical Israel.

BO214 Samuel (2 hours)

A literary, historical, and theological study of the Book of Samuel, with special attention on contemporary application and leadership succession.

BO215 Kings (2 hours)

A literary, historical, and theological study of the Book of Kings, with special attention on contemporary application and leadership.

BO301 OT Theology (2 hours)

A study of the theological message, historical background, and its development of the Old Testament. Attention will be given to the topics like covenant, Deuteronomic theology, wisdom, and apocalypse that weave in and out of the Old Testament book as a whole.

BO311 Major Prophets (3 hours)

A study of the content, literary styles, historical background, and theology of the Major Prophets, i.e. the book of Isaiah, Jeremiah, Lamentation, Ezekiel, and Daniel. Special attention will be given to how the messages of the five books may be applied to contemporary life.

BO312 Isaiah (2 hours)

A literary, historical, and theological study of the book of Isaiah. Special attention will be given to its literary unity, authority, and the significance of the Dead Sea Discoveries on its meaning.

BO 313 Jeremiah (2 hours)

A literary, historical, and theological study of the book of Jeremiah. Special attention will be given to its redaction activities, Deuteronomic and non-Deuteronomic characteristics, and the significance of the Dead Sea Discoveries on its meaning.

BO 314 Psalms (2 hours)

A literary, historical, and theological study of the book of Psalms. Special attention will be given to the formation of the five books of Psalms, and how the praises, laments, prayers, and thanksgiving may be applied to contemporary life.

BO 315 Job (2 hours)

A literary and theological study of Job of the Old Testament, with emphasis on contemporary application.

BO316 Proverbs (2 hours)

A literary and theological study of Proverbs of the Old Testament, with emphasis on contemporary application.

BO 317 Ecclesiastics and Song of Songs (2 hours)

A literary and theological study of Ecclesiastes and Song and Songs of the Old Testament, with emphasis on contemporary application.

BO 320 Old Testament Introduction (1 hour)

A study of the historical background and canon of the Old Testament, and evaluation of Old Testament criticism, and an examination of special introductory problems of Masoretic Text like Dead Sea Discoveries.

BN 111 Gospels (3 hours)

An introduction to the four Gospels as history, literature, and theology. Topics of discussion include the synoptic problem and the distinctive features and theology of each of the four Gospels; the relationship between history and faith; Jesus' miracles, parables, and teaching about the Kingdom.

BN 112 New Testament Epistles (3 hours)

An Introduction to the Epistles and their theology. Selected Pauline epistles will be studied with emphasis on the application of Pauline theology to Christian life and the pastoral needs of the churches in our time.

BN 112 New Testament Epistles (3 hours)

An introduction to the Epistles and their theology. Selected Pauline epistles will be studied with emphasis on the application of Pauline theology to Christian life and

the pastoral needs of the churches in our time.

BN 113 Acts (2 hours)

An exegesis of the Book of Acts. Attention will be given to its background, purpose, structure, theological themes, and their significance for missionary application.

BN 211 Johannine Literature (2 hours)

A study of the Person, teachings, and work of the Son of God according to John as depicted in his Gospel and letters.

BN 213 Hebrews (2 hours)

A study of the background, purpose, and theme of the book of Hebrews, as well as its content, characteristics, and messages, with the purpose of discovering the value of spirituality so as to guide our faith and daily life. \

BN 311 Romans (2 hours)

An exegesis of Paul's letter to the Romans. Attention will be given to its background, purpose, structure, theological themes, and their significance for Christian life and pastoral application.

BN 316 Matthew (2 hours)

A study of the background, purpose, and theme of the Book of Matthew, as well as its characteristics and messages, with special attention on contemporary application.

BN 317 Revelation (2 hours)

A study of the background, purpose, and theme of the book of Revelation, as well as its apocalyptic characteristics and messages with special attention on contemporary application.

BN 302 NT Theology (2 hours)

A study of the theological message, historical background, and the development of the New Testament. Attention will be given to the unity and diversity of New Testament theology.

BN 320 New Testament Introduction (2 hour)

A study of the historical background and canon of the introductory problems of selected New Testament passages.

Theology and History Courses

TT101 Systematic Theology I (2 hours)

Topics for study include methodology, the doctrine of God, Revelation, and the Bible. These constitute the basis of theological study.

TT102 Systematic Theology II (2 hours)

Topics for study include the Christian Doctrine of Creation, Man as the image of God and as a sinner.

TT201 Systematic Theology III (2 hours)

Topics for study include the Person of Christ as God-man, the atonement and resurrection of Jesus, faith and the appropriation of salvation, election, and reprobation.

TT202 Systematic Theology IV (2 hours)

Topics for study include the Christian doctrines of the Holy Spirit, the Church, the Sacraments, and Eschatology.

TT203 Apologetics (2 hours)

A study of biblical apologetics, mainline apologetical approaches in the past, apologetic issues facing Christians such as cults, the existence of God, the problem of evil and suffering, and modern ideologies.

TT301 Christian Ethics (2 hours)

A study of the biblical and theological foundations of ethics and the applications of ethical principles to modern issues such as divorce and remarriage, homosexuality, abortion, euthanasia, lying, the death penalty, and politics.

TH101 World Church History I (2 hours)

A study of world church history from early church fathers to the Reformation. In response to persecution and the rise of heresies, the Church developed doctrines, church organizations, and church councils after Constantine. Other events, such as the emergence of the Holy Roman Empire and the Monastic orders, the great schism in the Church, the Crusades, Scholasticism, and Humanism, lead to the Reformation.

TH102 World Church History II (2 hours)

A study of world church history of the Post-Reformation period. The medieval Renaissance gives rise to

Reformation and Counter-Reformation. Then came the Enlightenment, Puritanism, Pietism, Rationalism, Revivalism, and Missions. The world mission, Liberalism, Colonialism, Communism, and Capitalism gradually moved the Western Church away from the center and brought in the global Christian Church of the 21st Century.

TH201 Chinese Church History I (2 hours)

A study of the origin and development of Christianity in China, including the growth of Nestorians in the Tang dynasty, Tessa (Yelikewen) in the Yuan dynasty, the Catholics in the Ming and Qing dynasties, the arrival of Morrison, and the developments of the Protestant churches up to the rise of Communist China.

TH202 Chinese Church History II (2 hours)

A study of the development and revivals of Christianity in China from the rise of communism to nowadays modern China shows the wonderful works of God and the challenges the churches face.

TR301 Christianity and Chinese Culture (2 hours)

This course examines the tradition and transformation of the Chinese culture and society, as well as their relationship to Christianity. Topics include the intrinsic characteristics of Chinese culture, the impact of alien culture on the structure of Chinese mind and society, reflection of intellectuals on the transformation, and how and what Christianity may contribute to China.

TR302 Christianity and Zen (2 hours)

This course is a study of Zen Buddhism and its comparison with and contrast to Christianity in the areas of ethics, salvation, language, and cosmology. It will point to the necessity of Christ.

Ministerial Studies Courses

PS101 Leading Bible Study I (2 hours)

A course where students learn Bible study methods to enable changes in the life of the participants. It is designed to equip the students with tools for applying and

teaching the Bible. Old Testament historical books will be used for practice.

PS102 Leading Bible Study II (2 hours)

A Course where students learn Bible study methods to enable changes in the life of the participants. It is designed to equip the students with tools for applying and teaching the Bible. Old Testament prophetic books will be used for practice.

PP201 Expository Preaching (3 hours)

Through lectures, group studies, practice, and evaluation, students are led to understand the basic principles of expository preaching and are equipped to transform in-depth Bible study into good sermons. Students will be given opportunities to preach and will be evaluated.

PP301, 302 Preaching Practice (1 to 2 hours)

A follow-up of Homiletics & Practice. Students are given opportunities to preach and to be evaluated. Emphasis is on New Testament expository preaching.

ME101 Evangelism (2 hours)

This course is to equip students and provide opportunities for evangelism. The principles and various methods for effective and holistic evangelism will be examined and evaluated.

PC204 Pastoral Ministry (3 hours)

A study of the biblical, theological, and practical considerations of pastors and lay leaders in the context of local Church. Topics include their calling, role, and function in administering church meetings, ordinances, caring, visitation, weddings, funerals, spiritual direction, and office administration. There is also an overview of the history and development of forms of church government.

PC206 Mental Health and Pastoral Care (2 hours)

A study of mental problems like depression and suicide among Chinese communities and their cultural factors and hindrance to treatment. The focus is on the interaction of environment, D.N.A., and brain function and how pastoral care can be used to counsel and build up mental health.

PP207 Servant Leadership (2 hours)

A study of the seven core values of servant leadership: love, humility, service, cooperation, courage, integrity and excellence. Topics include biblical leadership, how to be a true servant leader, and leading innovation and change.

PP208 Church Leadership & Resolving Conflict (2 hours)

A study of effective leadership styles in Church, the use of biblical principles and management concepts to deal with conflicts between pastors and between pastors and congregation, and the use of love and reason to resolve different kinds of conflict systematically.

IB/IT/IM Guided Study (1 to 3 hours)

GS102: An individual student may embark on a guided study, upon the consent of a faculty member, in order to fulfill certain academic requirements.

Practical Media Courses

All PM courses require a personal laptop computer. System requirement: Windows 7 or later.

PM102 Cloud & PowerPoint (1 hour)

Success depends both on having knowledge and on skillfully communicating that knowledge. This course helps you dynamically present information and interact with others by improving the essential elements of communication.

Prerequisite: Familiar with Windows operation system

PM201 Website Design I (2 hours)

A study of using Adobe Dreamweaver CS4 to design web pages. Topics include graphic design principles, HTML, JavaScript, Cascading Style Sheets, multimedia like video files, sound files, database, and Google Apps to import and export files, and an understanding of complete network system and structure. Prerequisite: experience in browsing the Internet.

PM211 Website Design II (2 hours)

A continuation of Website Design I, with more practice and discussion on design skills to build a Dynamic Website of professional quality. Prerequisite: Website Design I

PM302 Images & Photoshop (2 hours)

Learn how to use Photoshop's basic functions and tools to modify images and create composite images through hands-on learning experiences to make promotional images commonly used in churches and organizations. Along the way, we will get in touch with basic color theory, graphic design trends, and web communications.

PM304 Internet Ministries (2 hours)

A study of the trends in the mobile network, the concepts of Chinese-Western and all-round integration, and its application to global mission. Usage of Apps include Facebook, Twitter, Google+, YouVersion, Church Online, Q.Q.

PM405 Cloud & Church Database (2 hours)

A study of the use of Google Cloud and its mail system on church databases like membership, calendars, and mobile systems. Topics include the use of WeChat, Line, and Facebook for online fellowship, and Blogger and; the use of IOS/Android apps like Evernote, Dropbox, and Goodreader for Bible study.

PM406 Digital Video Production I (2 hours)

This course focuses on making video using a digital camera or recorder and the aesthetics of capturing a frame. Includes voice-over recording, background music selection, etc.

PM407 Digital Video Production II (2 hours)

A continuation of PM406. This course focuses on making video using a digital camera or recorder. Includes storyboarding, voice-over recording, background music selection, subtitles, etc.